

FIRE SUPPORT PLAN

05 JULY 2024

FAC(A): FELON 1
1xOH-58D
72.0 FM PLAIN
ON STATION: **1920 EST**
MARK AVAILABLE: LASER, SMOKE, TALK-ON
FARP TURNAROUND: +00:18:00

MISSION: CLEAR GOTHAM CITY OF ALL ENEMY FORCES

N 36 46.754 W 115 26.637 ELEV. 3491'
11S PA 38855 71512

INTEL: GOTHAM CITY OVERRAN BY ENEMY FORCES

- ARMOR, APCs, LIGHT UTILITY SPREAD THROUGHOUT CITY
- AIRFIELD SOUTHWEST OF CITY CENTER
- AMMO SUPPLY POINT NORTHEAST OF CITY CENTER
- FORTIFIED BUILDINGS THROUGHOUT THE CITY

CONCEPT OF OPERATION:

ALL AIRCRAFT CONTACT FELON 5NM FROM HAYFORD PEAK. EXPECT PUSH TO HOLD PRIOR TO CAS CHECK IN.

ACP HAYFORD PEAK: N 36 39.878 W 115 09.615
11S PA 64418 59247

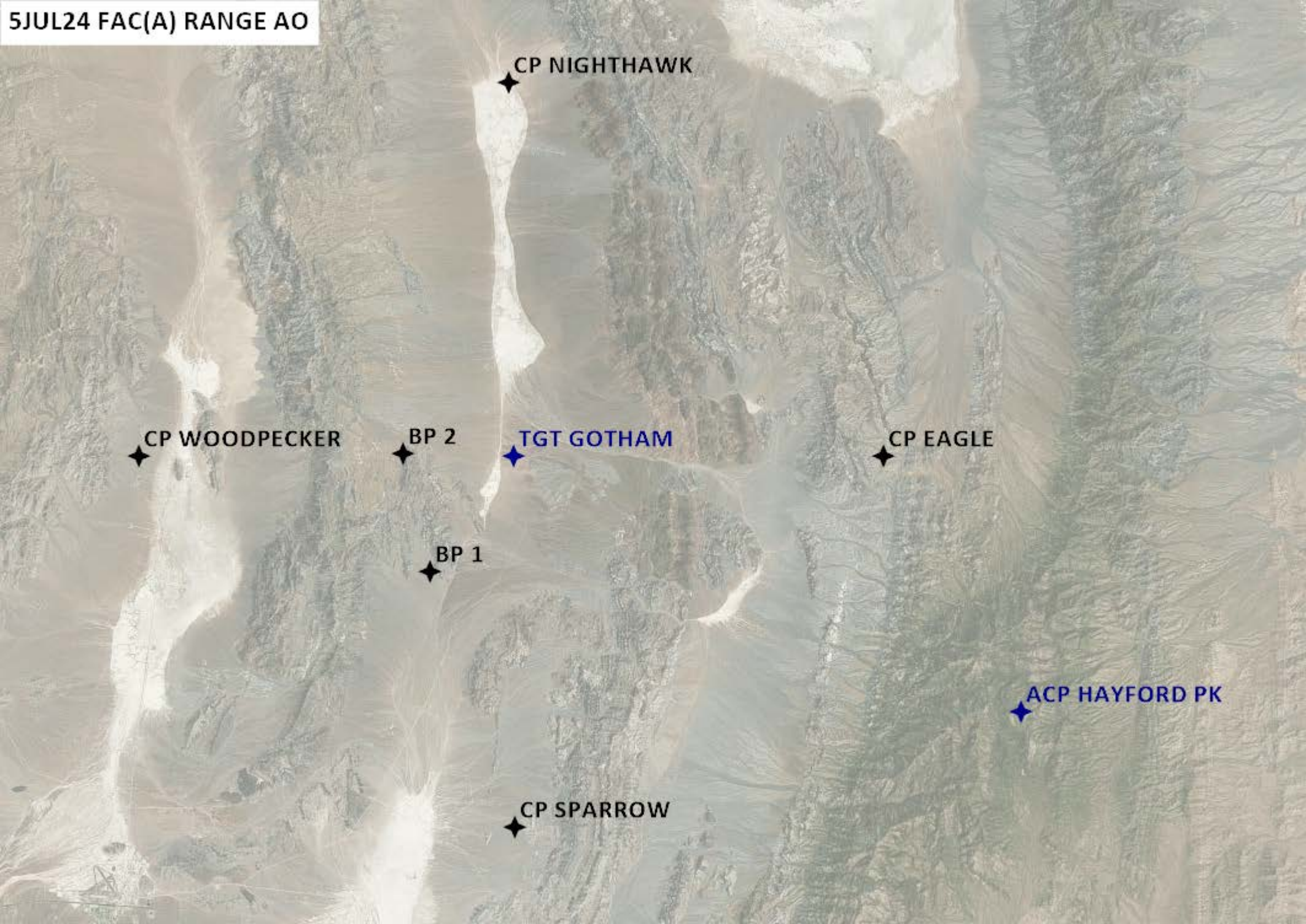
AIRCRAFT PROVIDE CAS CHECK IN IAW V303FG CAS WEAPONS SCHOOL PRESENTATION.

AIRSPACE CONTROL BY FELON 1, ALL ATTACKS INITIATED FROM CPs

CP NIGHTHAWK: N 36 56.763 W 115 26.784 11S PA 38336 90015
CP EAGLE: N 36 46.743 W 115 14.218 11S PA 57328 71812
CP SPARROW: N 36 36.766 W 115 26.578 11S PA 39243 53045
CP WARBLER: N 36 46.759 W 115 39.164 11S PA 20223 71238

BP 1 (RW ONLY): N 36 43.636 W 115 29.436 11S PA 34783 65680
BP 2 (RW ONLY): N 36 46.804 W 115 30.337 11S PA 33351 71516

ALL ENGAGEMENTS PASSED USING CAS 9 LINE BRIEFING



CP NIGHTHAWK

CP WOODPECKER

BP 2

TGT GOTHAM

CP EAGLE

BP 1

ACP HAYFORD PK

CP SPARROW

5JUL24 FAC(A) RANGE GRG 1 MACRO

394 396 728

11S PA

11S PA

720
724
722
72
718
716
714
712
71
708
706
704

726
724
722
72
718
716
714
712
71
708
706
704

TGT GOTHAM



11S PA

11S PA

38 382 384 386 388 39 392 394 396 702 390

11S PA

11S PA

718

718

716

716

714

714

11S PA

11S PA

34

386

388

39

392

394

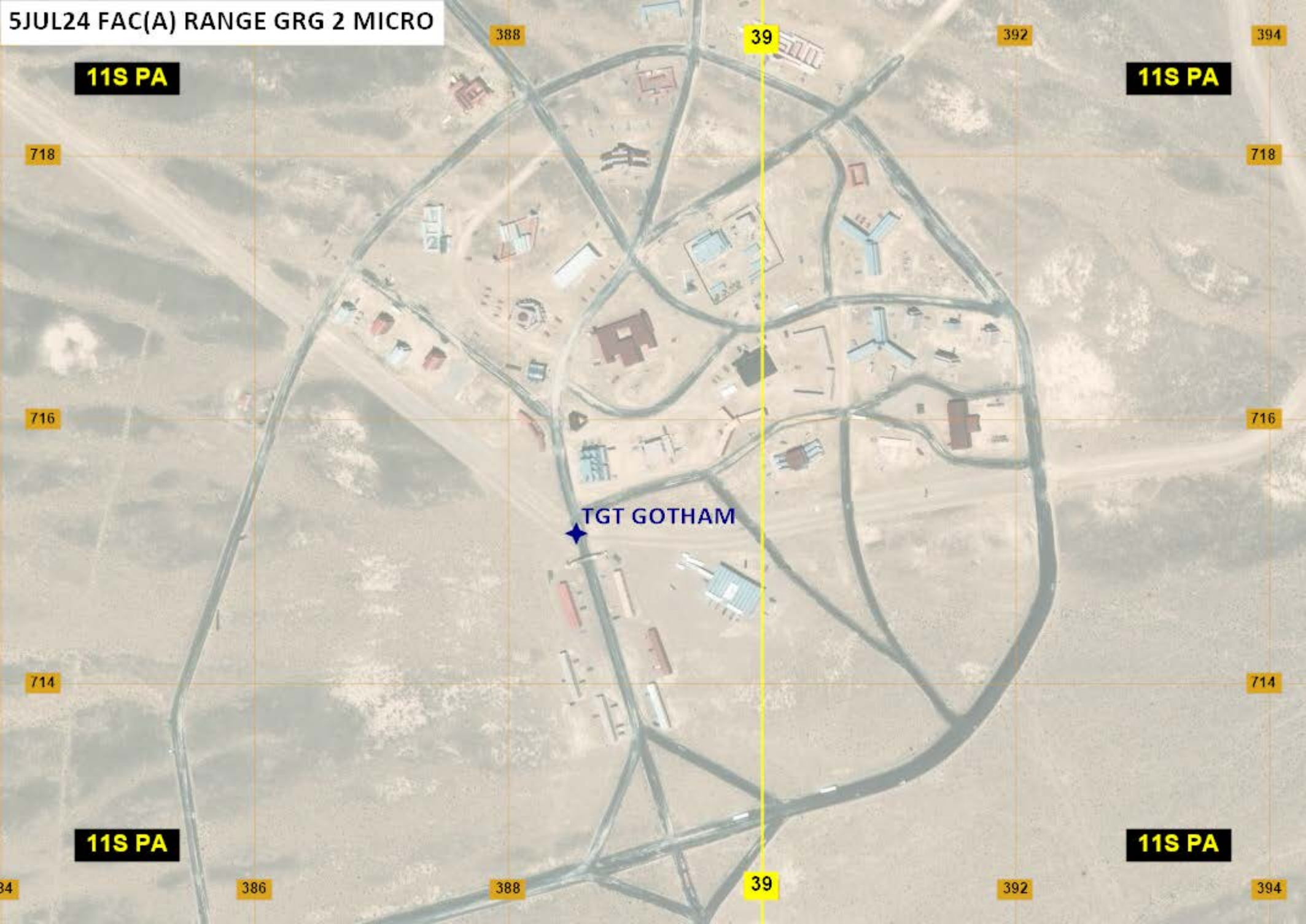
388

39

392

394

TGT GOTHAM



11S PA

11S PA

11S PA

11S PA

724

724

722

722

72

72

388

39

392

726 39

384

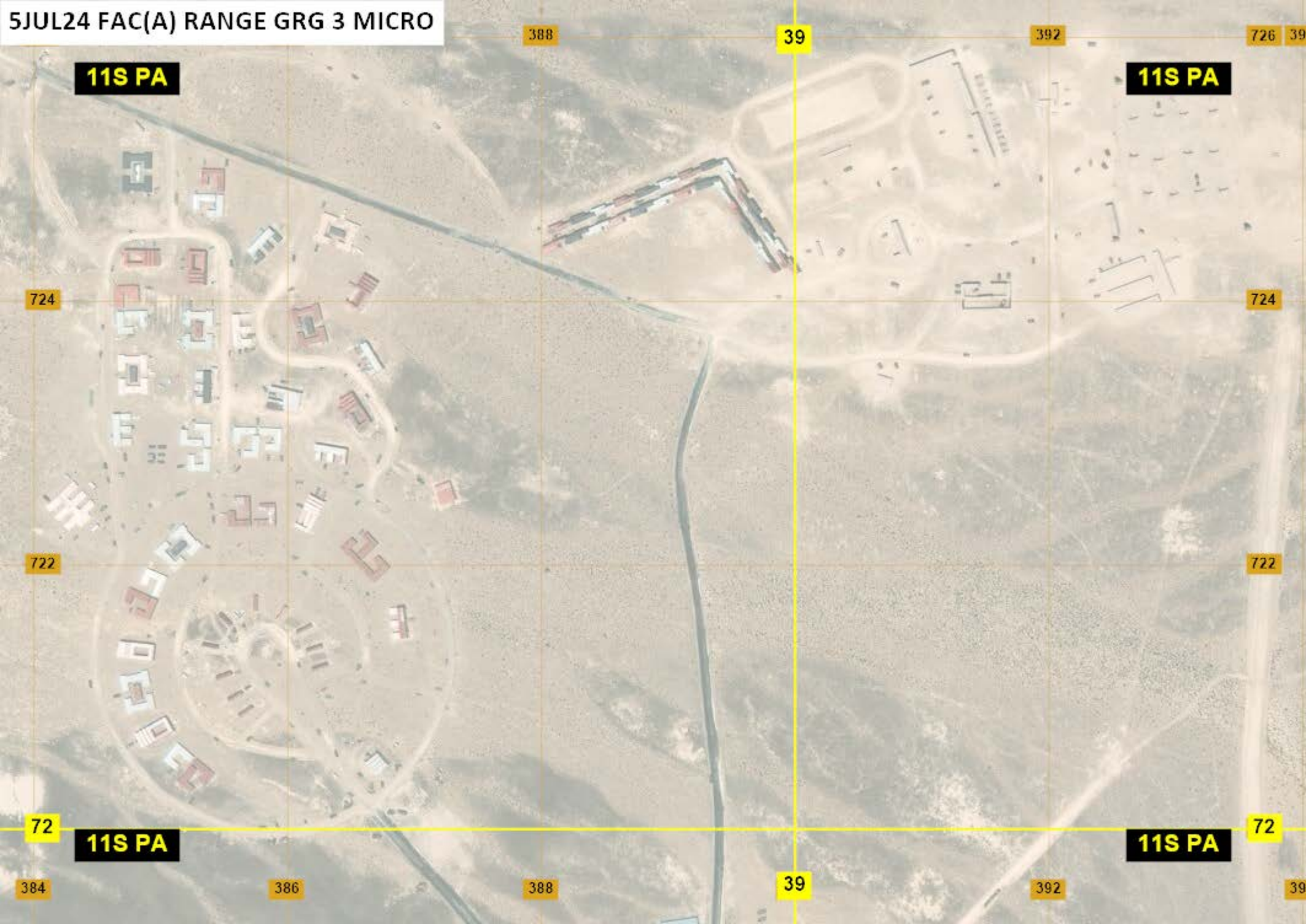
386

388

39

392

39



11S PA

11S PA

708

708

706

706

11S PA

11S PA

394

396

396

396

396



5JUL24 FAC(A) RANGE GRG 5 MICRO

384

11S PA

11S PA

714

714

712

712

71

71

11S PA

11S PA

708

38

382

304

708

